

TERMS AND CONDITIONS FOR:
SANTA FE, NM: Healthy, Spiritual & Conscious Relationships
June 17-22nd, 2011
Led by: Sheri Rosenthal
Journeys of the Spirit ®
727.421.0849 phone
727.344.1339 fax
<http://www.journeysofthespirit.com/trips/santa-fe-retreat/>

Included

The 2011 trip cost is: \$1125.00 USD per person double occupancy (early-bird special!). If you desire a single room, the cost is an additional \$250.00 USD per person). Sign-up by May 1st – the trip price is going up to \$1295.00! This price includes: double occupancy accommodations for 5 nights. All teachings from Sheri Rosenthal are included. Five breakfasts are included in this itinerary. Wine and cheese is available from 4-5:00pm daily. An afternoon visit to El Santuario de Chimayo and to The Monastery of Christ in the Desert is included. All tips for our baggage handlers (one bag per person) are included.

Not-Included

We are not responsible for your round trip flight from your home to Albuquerque, New Mexico or van transport from the Albuquerque, NM airport to Santa Fe. Any spa treatments are not-included. Alcoholic beverages, non-included drinks, souvenir shopping and laundry services are not included. Lunches, dinners and shopping are not-included. Also not included are: items of a personal nature such as, gifts, toll calls, excess baggage, medical costs, the costs of hospitalization and evacuation from remote areas, travel insurance and additional expenses arising from the delay or extension of a trip due to weather, political disputes, sickness, failure of transportation, or other causes beyond our control. Tips for the bell boys and room maids are not-included (we recommend you leave \$1.00 USD per day per person in your room. Other non-included items would be: any other activities and tours not included in our package.

Payment

A deposit of \$500.00 USD with your trip registration forms is preferred by: March 15th, 2011. Final payment is due: April 15th, 2011. All payments are by Visa or MasterCard, Paypal, money order or cashier's check, made out to "Sheri A. Rosenthal, DPM Inc." All payments must be received in the office a minimum of one week **before** the date of trip departure. We cannot make exceptions to this policy. You can make your payments online on the website if you like.

Cancellation and Refunds

Any cancellation made in writing between: March 15th, 2011 and April 15th, 2011 will result in a cancellation fee of \$500.00 USD. Any cancellation made between: April 15th, 2011 and the trip departure will result in a total loss of your \$500.00 USD deposit along with any non-refundable funds made to our suppliers in New Mexico. Any cancellation made: after the trip departs will result in total loss of trip funds. We reserve the right to cancel the trip if it is not meeting the trip minimum. All cancellations must be made to Sheri A. Rosenthal, DPM Inc in writing and any refund requests must be made in writing to Sheri A. Rosenthal, DPM Inc within 30 days of the return date. Please send written requests to: 6245 Vista Verde Drive West, Gulfport, FL 33707. **We strongly recommend Travel Cancellation Insurance if there is any chance you may have to cancel for any reason at all.** You can use our suggested [travel insurance company](#) online and choose from several policy options.

Sheri A. Rosenthal, DPM Inc dba Journeys of the Spirit ® reserves the right to cancel any trip prior to departure for any reason whatsoever, including an insufficient number of participants or logistical problems (e.g. acts of God, war, strikes, etc.), which may impede trip operations. The refund of all payments as described in the paragraph below shall release Sheri A. Rosenthal, DPM Inc dba Journeys of the Spirit ® from any further liability. A trip cancellation due to insufficient numbers would normally occur at least a month prior to departure, unless acts of God, war, strikes or other events impede our departure causing large numbers of participants opt to cancel participation on the journey in the last days before departure.

Sheri A. Rosenthal, DPM Inc dba Journeys of the Spirit ® must make substantial payments to suppliers (including providers of land travel) far in advance of the scheduled date on which we embark. If a trip is cancelled due to forces beyond our control (acts of God, war, labor strikes, earthquake, flooding, etc.), Sheri A. Rosenthal, DPM Inc dba Journeys of the Spirit ® will promptly refund the portion of the trip cost not advanced to suppliers (including any moneys set aside for airfare). Sheri A. Rosenthal, DPM Inc dba Journeys of the Spirit ® will use its best efforts to recover advance payments as promptly as possible, and will refund to you the amount recovered, if any. However, Sheri A. Rosenthal, DPM Inc dba Journeys of the Spirit ® does not guarantee recovery of any or all of the advance payments made, and our use of best efforts to recover these payments will not include the institution of any legal proceeding in foreign lands. This policy applies to a trip cancellation by client choice following any necessary increase in trip costs.

Thank you for joining us on this journey and for your cooperation & understanding!

SANTA FE, NM: Healthy, Spiritual & Conscious Relationships

June 17-22nd, 2011

Led by: Sheri Rosenthal

Are You Looking To...

- **Create healthy**, nourishing human connections and conscious partnerships?
- **Move past the blocks and limitations** preventing you from having the juiciest relationships?
- **Put the concepts from The Mastery of Love** into action in **your** life?
- **Explore Santa Fe**, one of the most culturally interesting, artistically diverse, and spiritually heart-felt destinations?

If so – join author Sheri Rosenthal as she shares how every relationship is an artistic co-creation based on the level of integrity each person is operating from. **If we come filled with love and the desire to give generously**, unconditionally and openly – *magic unfolds*. **If we come from the energy of lack and need**, hoping that someone is going to complete us or love what we dislike most in ourselves – *suffering is inevitable*. **When our relationship with our SELF is healthy**, filled with self-acceptance and self-esteem, this creates a solid foundation for any relationship to flourish..

Highlights Of Your Adventure:

- **You don't need to be in a romantic relationship** to come – *you just need to be human* ♥
- **Go deep into the The Mastery of Love** by author don Miguel Ruiz
- **Explore the relationship** you have with yourself – *is it one of respect?*
- **Energize the connections** you have with your friends and co-workers

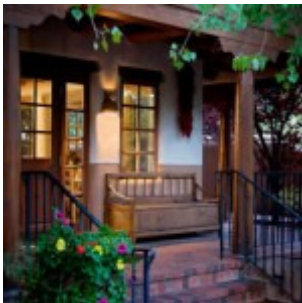
- **Re-frame the way you interact** with your beloved family and partners
- **Heal, expand and express** your communion with Spirit every day of your life
- **Delve into the thought-forms** that conspire to close your heart
- **Pray for healing** at El Santuario de Chimayo and take home some sacred blessed earth
- **Enjoy the quietude** perfect for meditation and reflection at The Monastery of Christ in the Desert
- **Visit the Cathedral of Saint Francis of Assisi**, the patron saint of the city
- **Have time to play** in Santa Fe: the shops, art galleries and restaurants! *Yum!*

Art, Food & Culture

There will be plenty of time to visit the **Georgia O'Keeffe art museum**, local galleries in town, great restaurants, and the charming shops. Wondrous miracles have occurred at the **El Santuario de Chimayo** and being in the energy of this historic shrine is very special. The history and traditions of the American Indians are very powerful in Santa Fe and you will see this reflected in the artist expression of the locals. **There is a vibrant night life** and you can see the famous **Juan Siddi Flamenco Theatre Company**, or dance to live blues, jazz, pop or folk music in one of Santa Fe's clubs and bars. A visit to [Ten Thousand Waves Spa](#) is the perfect place relax one afternoon. *It's about celebrating ourselves, life and each other!*

Itinerary for our Santa Fe Retreat

Day 1 – June 17th (-/-/-) Santa Fe!



We leave home and meet in Santa Fe, New Mexico. Conde Nast Traveler Magazine Readers' Choice Awards poll lists Santa Fe as the #3 most popular travel destination in the US. TripAdvisor Travelers' Choice Awards – For 2010, listed Santa Fe, New Mexico as the #2 US destination in the Relaxation & Spa category, #9 in the US for Great Food & Wine, and #10 for Culture and Sightseeing in the US. You can't beat the culture, food, art and spiritual heritage. **Tonight we meet as a group for dinner at 6:00pm** so make sure you arrive at the hotel by 5:00pm! Overnight at the Inn on the Alameda.

Day 2 – June 18th (B/-/S/-)



This morning our focus is on the relationship we have with ourselves. Some of the questions we will look to answer are: How we judge ourselves? What aspects of ourselves do we reject and dislike? How do we feel about ourselves physically? How do we allow others to treat us? The afternoon will be free for exploring and perhaps a great day to visit the Cathedral of Saint Francis of Assisi, the patron saint of the city. If you need some ideas on what to do, the [Santa Fe Visitors Bureau](#) has a great website filled with suggestions! Overnight at the Inn on the Alameda.

Day 3 – June 19th (B/-/S/-)



This morning our focus is on the relationships we have with friends, acquaintances and co-workers. Some of the questions we will look to answer are: What do I believe about friendship? What do I expect of the friends and acquaintances in my life? How does trust fit into the picture? How do I judge my co-workers and why? This afternoon we will take a drive to The Monastery of Christ in the Desert. There we'll be able to sit in reflection and meditate in the quietude of the monastery. Overnight at the Inn on the Alameda.

Day 4 – June 20th (B/-/S/-)



This morning our focus is on the relationships we have with our family and partners. Some of the questions we will look to answer are: What do I expect from my family? What responsibilities do I believe they have towards me? What happens if a family member or partner hurts you? How does forgiveness of family or partners change our lives? This afternoon we will take a drive to El Santuario de Chimayo and explore this beautiful old shrine. Bring a small bottle with you to take home some of the blessed earth. While we are here we will do a healing ceremony using the sacred dirt. Overnight at the Inn on the Alameda.

Day 5 – June 21st (B/-/S/-)



This morning our focus is on the relationship we have with Spirit/God/Source. Some of the questions we will look to answer are: What do we do if we are angry with God? Do we feel victimized by the painful incidences in our lives? Is Spirit to blame? What do we believe Spirit/God owes us? This afternoon is free for exploring the galleries of Santa Fe or perhaps going to Ten Thousand Waves for some spa services or even to simply sit in the hot tubs. Overnight at the Inn on the Alameda.

Day 6 – June 22nd (B/-/-) Home!

Today we leave our beautiful hotel and make our way back to the airport and get ready for our flights home. We say our last goodbyes, hugs and kisses as we prepare to take our new tools, gratitude, and revelations back home to put into practice in our lives!